

INSTRUCTIONS

Document Type Instructions

Document Title Hochiki CDX Detector Range Installation Instructions

Date September 2001

Version 2-3-0-247/Iss 6

Hochiki CDX Detector Range Installation Instructions



Product Covered : SLR-E, SLR-E (BLACK) , SIJ-E, DFJ(Range), DCD(Range) c/w YBN/YBO Bases

Introduction

The Conventional Detectors listed above all use a common mounting base (YBN-R/4) which is electronics free or a range of special bases as shown below ;

Base Name	Part No.	Base Name	Part No.
Standard without Remote LED	YBN-R/4	Hochiki LIVELINE with Remote LED	YBO-R/5ZD
Black base without Remote LED	YBN-R/4 (Black)	Hochiki SAV WIRE with Remote LED	YBO-R/5PA
Hochiki SAFELINE without Remote LED	YBN-R/4SK	Hochiki SAFELINE with Remote LED	YBO-R/5SK
Standard with Remote LED	YBO-R/5	ESCO & Mini-2000	YBO-R/5E
Standard with additional terminal	YBO-R/5H		

Follow the guidelines below before installation and maintenance. Hochiki cannot guarantee a detector's performance if these guidelines are not followed.

Caution

Hochiki CDX range detectors cannot be used to prevent fire itself, they are only intended to detect a certain characteristic of fire. The detector DFJ(Range) and DCD(Range) are used to detect conditions and changes in temperature and cannot detect smoke and other phenomena. When installing the detector, check that the location of each one has been planned according to appropriate fire regulations or recommendations. **Please note:- These Detectors are designed for indoor use only.**

Certain actions can cause permanent damage to the detector. If the detector is subjected to any of the following, it should not be used:

- Situations in which condensation exists.
- Situations in which corrosive gases exists.
- Situations in which obstacles exist, which could impede airflow to the detector.
- Situations in which dust or steam exists.
- Dis-assembly and re-assembly.
- Impact or shock.
- Touching the thermistor located in the centre of the detector (DFJ(Range) and DCD(Range) Heat detectors only).

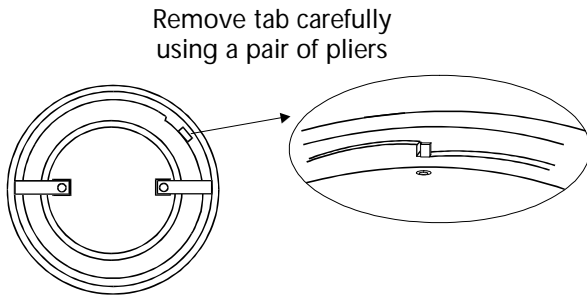
If damage is suspected after a fire has occurred, the detector should be replaced. After installation, all detectors on the fire alarm system should be tested to confirm correct operation. Only suitably trained engineers should carry out installations and maintenance.

The detector must be subject to periodic maintenance during regular service visits. This period should be outlined in the appropriate standards or recommendations. If there are no such standards existing, Hochiki recommend that the minimum period of maintenance should be 1 year and that the following should be taken into account:

- ❑ A regular operation test should be performed.
- ❑ A visual check for staining and mechanical damage should be made.
- ❑ Operation should only be checked by equipment that is capable of exceeding the required detection threshold.
- ❑ Detector operation should not be tested with a naked flame or open fire.

A dust cover is included with the detector to prevent contamination during installation. **The dust cover must be removed for the detector to operate.**

Head Locking Mechanism



The CDX range of Detectors can be locked onto their relevant bases by removing a plastic lug on the underside of the Detector. The Detector can then be removed by using a special Removal Tool (TSC-A100/ALG) which is available from Hochiki Europe (UK) Ltd.

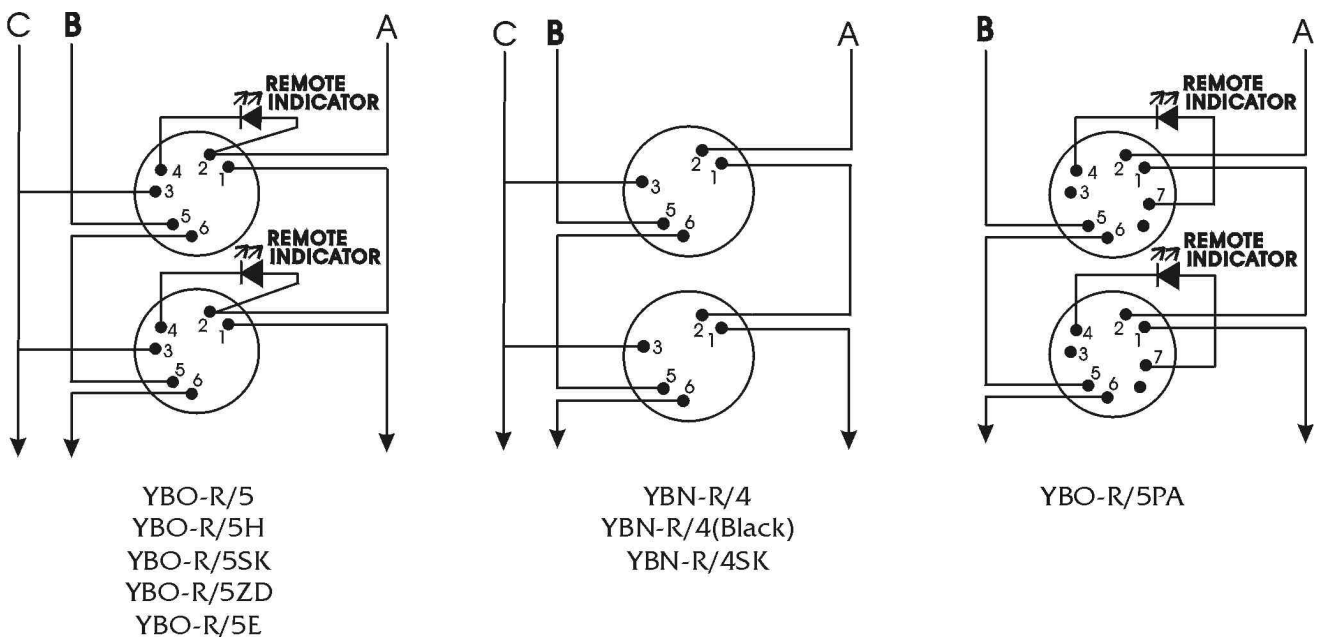
Wiring

The wiring diagram for the conventional detector base should be made as shown.

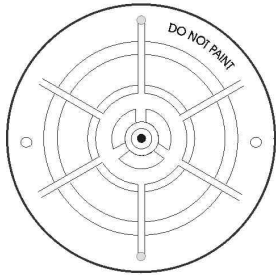
A: Zone (+)

B: Zone (-)

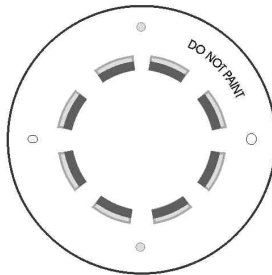
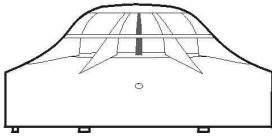
C: Cable Screen



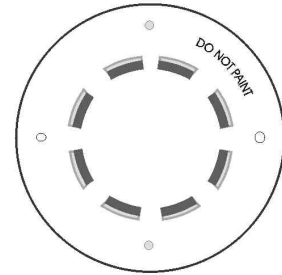
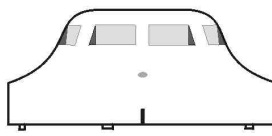
CDX DETECTOR RANGE



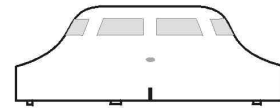
**CONVENTIONAL
HEAT DETECTOR
DCD Range/DFJ Range**



**CONVENTIONAL
IONISATION SMOKE DETECTOR
SIJ-E**



**CONVENTIONAL
PHOTO-ELECTRIC
SMOKE DETECTOR
SLR-E/SLR-E(Black)**



Hochiki Europe (UK) Ltd
Grosvenor Road, Gillingham Business Park,
Gillingham, Kent, ME8 0SA, England
Telephone: +44(0)1634 260133 Facsimile: +44(0)1634
260132
Email: sales@hochikieurope.com
Web: www.hochikieurope.com

Hochiki Europe (UK) Ltd. reserves the right to alter the specification of its products from time to time without notice. Although every effort has been made to ensure the accuracy of the information contained within this document it is not warranted or represented by Hochiki Europe (UK) Ltd. to be a complete and up-to-date description. Please check our web site for the latest version of this document.