

---

**SaveWire Fire Panel Operating Instructions**

---

Operation of fire panel.

Normal operation: The green LED is illuminated indicating system healthy. All other LED's are off.

**Fire condition**

Triggered off by a smoke detector or a break glass operation and is indicated by a red LED showing common fire and a red LED showing the zone in fire, accompanied by a constant tone from the panel and the operation of zonal sounders.

**Evacuate.**

Operation of the evacuate or remote evacuate will trigger all sounders. The remote evacuate is a none latching input.

**Silence.**

To silence the sounders, press the silence button having first enabled the controls with the keyswitch. The sounders will cease to operate and the panel buzzer will pulse to indicate that the silence has been pressed. Auxiliary relay ( reset on silence ) will be reset.

**Reset/ Lamp test.**

The reset button will perform a lamp test of all LED's which should illuminate in sequence.

It also resets the processor, resets the detectors, resets any fire condition that may be latched, resets buzzer if in operation, resets all auxiliary relays and resets sounders. If a fire condition or fault persists after reset, the circuit will redisplay the condition. If a fire condition exists the sounders will come on even if they were silenced previously. When a fire condition is indicated, the source of the detection should be investigated before reset is pressed in order to locate the smoke detector triggering the system. (The smoke detector operating will have an LED illuminated on it.)

If there is a residue of smoke in the area, the smoke detectors may reactivate after reset, In this case try again after a short time.

The zones are monitored for short circuit, shown by a constant LED on zone fault.

open circuit gives flashing LED on zone fault, flashing in time with the zone indicator LED.

Head removal zone fault gives flashing LED in time with zone indicator LED but reverse flash rate to open circuit. The zonal fuses are monitored , if blown, indicated by open circuit on that zone.

Head removal are monitored every 25 seconds.

One man test

In this mode the unit will reset every 10 seconds. This will enable the detectors to be tested without the need to return to the unit to reset the detectors. Whilst in this mode, the fault lamp will come on and the buzzer will pulse. The silence function will not operate.

The zones, sounders, relays and remote input can all be isolated from the front controls by pressing the mode button and selecting or clearing the operation by pressing the set/clear key. A constant indicator shows that function has been selected. (A flashing indicator shows it has been cleared).

To isolate a zone first select the zone isolate function, further presses of the mode key enable isolation of the individual zone in the same manner as before.

When the appropriate isolation has been selected, pressing reset returns the panel to normal operation. If no keys are pressed for 25 seconds the panel will automatically reset.

One man test may be selected also by pressing the mode button and selecting or clearing by pressing the set/clear button, followed by pressing reset.

See the Mode selecting/ clearing instruction sheet for further detail.

## Option Switches

Internally there is a set of six switches to alter the functions of the panel.

### Pos 1

pulsing revac

In this mode the sounders will pulse when revac is triggered.

### Pos 2

Pre 1988 mode

In this mode the panel operates to pre 1988 specifications, i.e. a short circuit gives a fire condition. This mode can be used when a panel is used with old detectors or even a mixture of old and new detectors. Note that in this mode savwire call points must be used and there is no head removal.

### Pos 3

Non latch zone 1( via revac i/p)

In this mode zone 1 will not latch when revac is triggered. This mode is used to operate the fire alarm panel from another panel, say in a landlord/tenant application. The landlord's panel can trigger a number of other panels to show fire, but they are reset when the landlord's panel is reset.

### Pos 4

Pulsing sounders

In this mode when the panel is triggered all sounders will pulse.

### Pos 5

Sounder delay (pulsing)

In this mode in fire condition, all sounders will pulse for two minutes , then become constant.

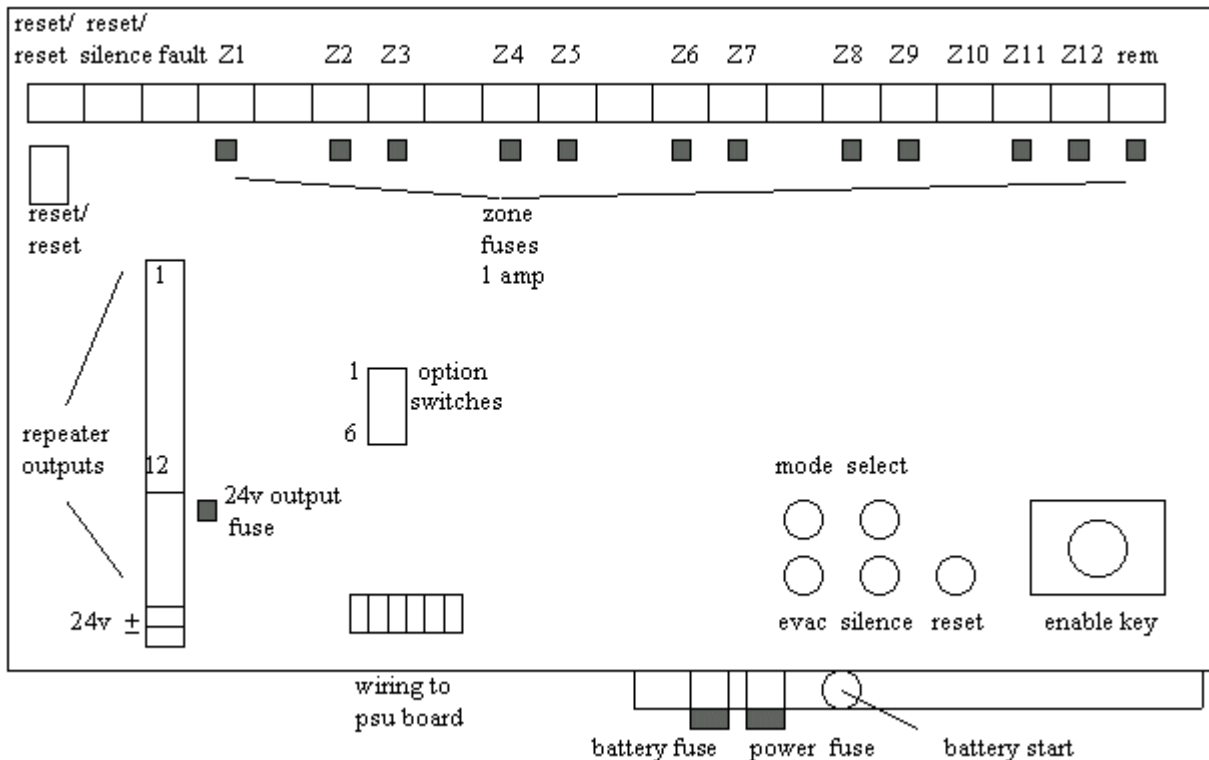
### Pos 6

Zone 1 & revac Lamp/buzzer only

In this mode when revac is triggered, the panel will give lamp and buzzer indication only.

No sounders will operate. All other zones will operate normally.

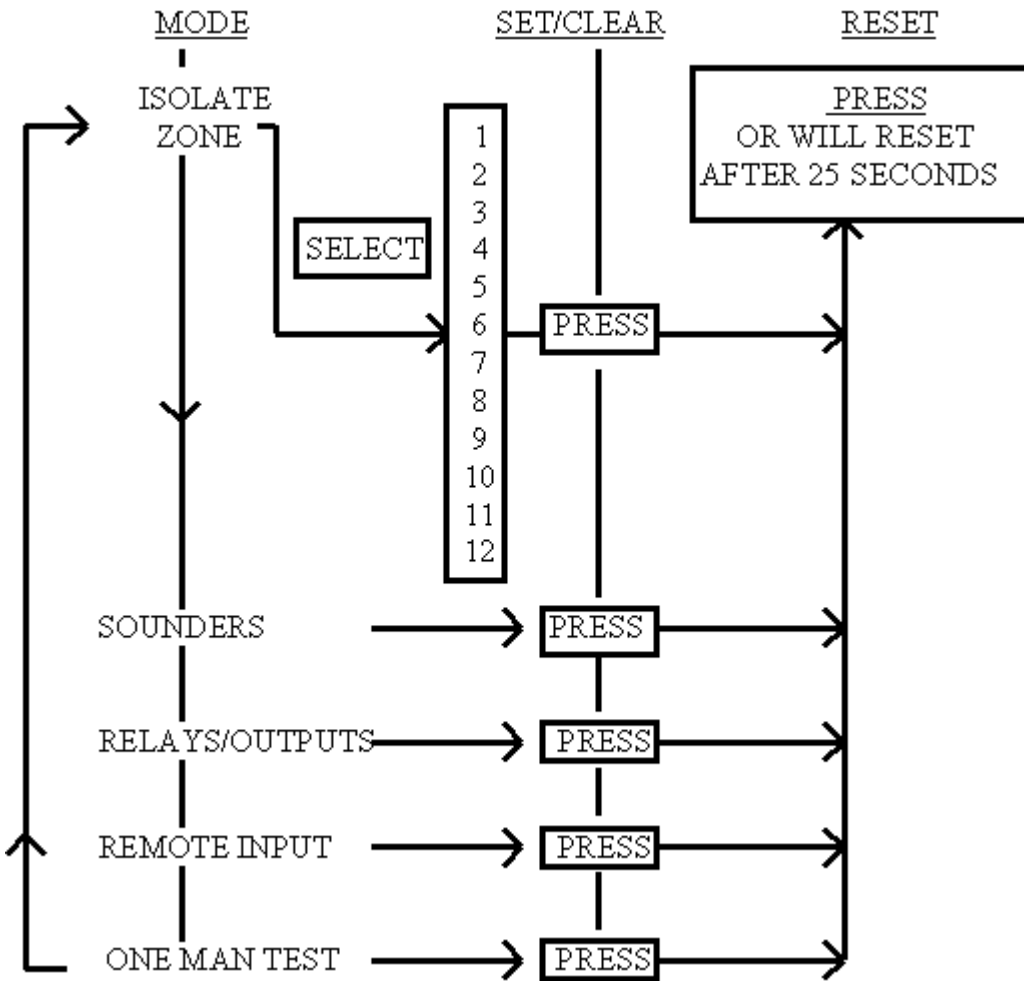
Board Layout



Technical specifications.

- Detector zones - 4K3 end of line resistor.
- Up to 12 zones. 20 detectors per zone, any number of break glasses (savwire)
- Each zone is fused at 1 amp.
- Power supply rated at 2 amps.
- Battery charger capable of charging 2 x 12v 7AH batteries.
- Charging voltage 27.6 volts.
- Batteries protected from full discharge by battery protect relay. This relay prevents the panel being powered up on batteries only at commissioning. To override this there is a push button on the back board to start the panel on batteries only. The battery and power supply fuses are also situated on this rear board.
- Control panel consumption 110 ma max.
- 2 Auxiliary relays, with 3 sets of volt free changeover contacts rated at 2 amp max. two operate on fire, reset on reset. One operates on fire, reset on silence.
- 1 Fault relay, with one set of volt free changeover contacts.
- 24 volt d.c supply for beam detectors etc.
- Repeater output connections.

Panel Isolation



To select zone isolation

1. First press mode, Note, the zone isolation light will be flashing.
2. Press set/clear, the light will become constant.
3. Press mode, the zone light will now be flashing.
4. Continue pressing the mode button until you get to the zone required.
5. Press set/clear, the light will become constant.
6. Press reset, The zone is now isolated.

To select other modes.

1. First press mode, Note, the light will be flashing.
2. Then continue pressing it, rotating round the options, until the one wanted.
3. Press set/clear, the light will become constant.
4. Press reset, the mode selected is now set.

To clear zone isolation.

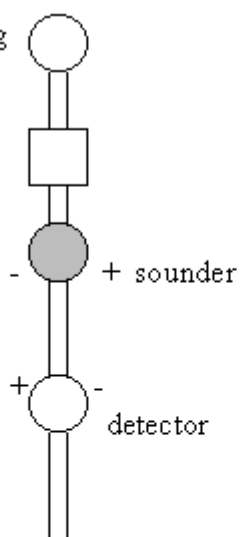
1. First press mode, Note, the zone isolation light will be flashing.
2. Press set/clear, the light will become constant.
3. Press mode, the zone light will now be flashing.
4. Press reset, the mode is now cleared.

To clear other modes.

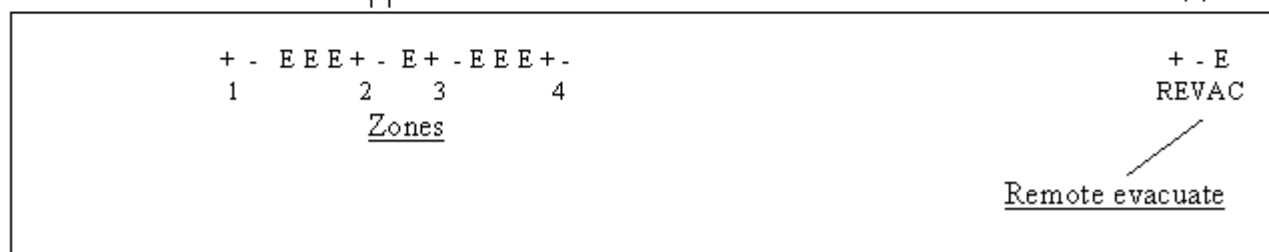
1. First press mode, Note, the light will be flashing.
2. Press reset, the mode is now cleared.

Panel connections.

4K3 End of line Monitoring resistor on last device on each zone.



Remote evacuate. This input can be used to sound the alarms from a remote source by introducing a 470 ohm resistor across the line. A 4K3 end of line resistor must be fitted.



Please note, this is a savwire panel, sounders connected to the zones must be reverse connected ie panel +ve connects to detector +ve but sounder -ve.