

Askari Electronic Sounders



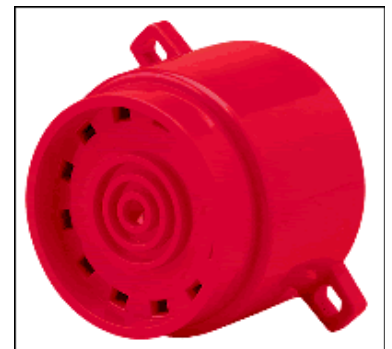
The Askari range of electronic sounders has been developed to provide alarm signals for a wide variety of fire, commercial and industrial signalling applications. Designed for reliability in operation, three different models are available: the Askari Compact sounder for use in hotel bedrooms and other areas where unobtrusive installation is important; the Askari Panel, for panel mounting and use in industrial instrumentation and control centre applications; the Askari Flange, for surface mounting within cabinets and machines for industrial control, transport and vending machine applications.

- 28 SIGNAL TONES AVAILABLE
- 12V DC & 24V DC OPERATION IN SAME SOUNDER NO ADJUSTMENT REQUIRED
- HIGH SOUND OUTPUT WITH LOW CURRENT CONSUMPTION
- AUTOMATIC SYNCHRONISED PHASED START
- ENCAPSULATED ELECTRONICS
- AVAILABLE IN RED OR WHITE ABS MOULDING
- VERSIONS APPROVED TO CNPP REQUIREMENTS

Askari Flange

The Askari Flange sounder is designed for use in applications where an alarm signal is required from within cabinets or machines. The sounder has a wide variety of applications including pedestrian crossing sound signals, vending machine security alarms etc.

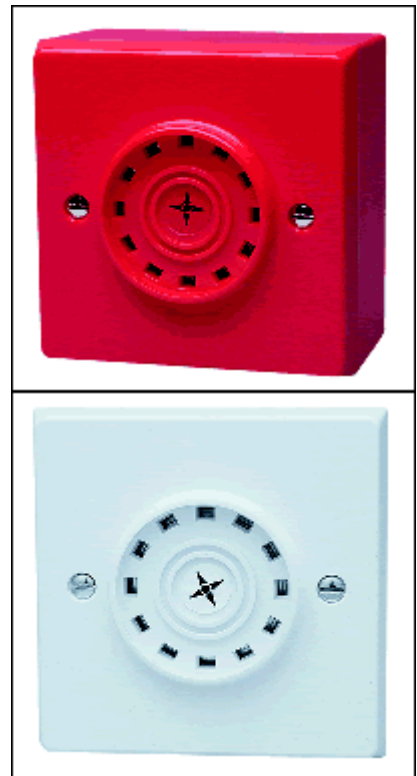
- Two protruding flanges enable the sounder to be securely fixed to any surface.
- The sounder is supplied pre-set to any one of 28 tones (see tone table). The unit is set to tone 5 unless specified otherwise.
- A second pre-set tone is available if a third wire is installed in the sounder circuit (see tone table).



Askari Compact

The Askari Compact is an ideal electronic sounder for use in hotel bedrooms and has been designed to meet the requirements of BS5839 Part 1 with regard to sound output in sleeping risk areas, its compact design will blend in with most decors to provide an unobtrusive flush or surface mounting sounder.

- The sounder is supplied pre-set to any one of 28 tones (see tone table). The unit is set to tone 3 unless specified otherwise.
- A second pre-set tone is available if a third wire is installed in the sounder circuit (see tone table).
- The sounder can be flush mounted using a standard single gang flush mounting box (minimum box depth of 36mm to allow wiring termination clearance), or a surface mounting box can be supplied.
- The signal tones available match those available for the Roshni and Squashni range of sounders and can therefore be mixed in the same system.
- Volume control.
- Available in red or white ABS moulding.



Askari Panel

The Askari Panel sounder has been developed for instrumentation and control panel alarms, being designed for easy mounting onto panel fronts.

- The screw on top clamps the sounder body to the panel surface.
- The sounder is supplied pre-set to one of 28 different tones (see tone table). The unit is set to tone 5 unless specified otherwise.
- A second pre-set tone is available if a third wire is installed in the sounder circuit (see tone table).
- The Askari Panel sounder is supplied with three flying leads for circuit connection.
- Optional volume control.

